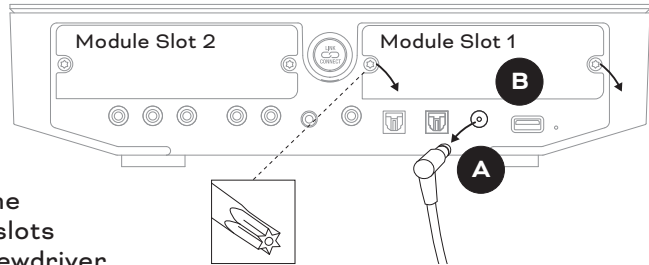


DALI SOUND HUB

HDMI AUDIO MODULE INSTALLATION

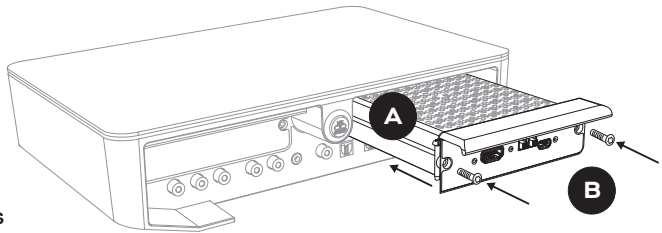
- 1 **A** Unplug the power cord from the Sound Hub.

- B** Remove the rear cover of one of the available module slots using Torx 10 screwdriver.

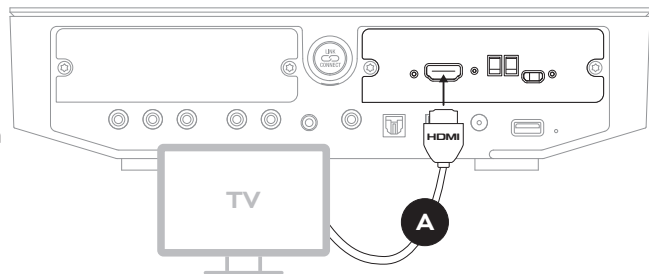


- 2 **A** Slide the HDMI module into the chosen module slot.

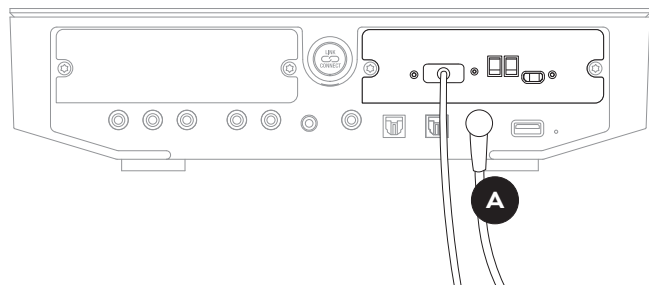
- B** Reinstall the screws using Torx 10 screwdriver.



- 3 **A** Turn off the TV and insert HDMI cable from HDMI ARC or eARC connection on the TV.



- 4 **A** Reconnect the power cord of the Sound Hub before turning on the TV.



Setup Guide



For setup instructions please scan the code or see the manual on www.dali-speakers.com

