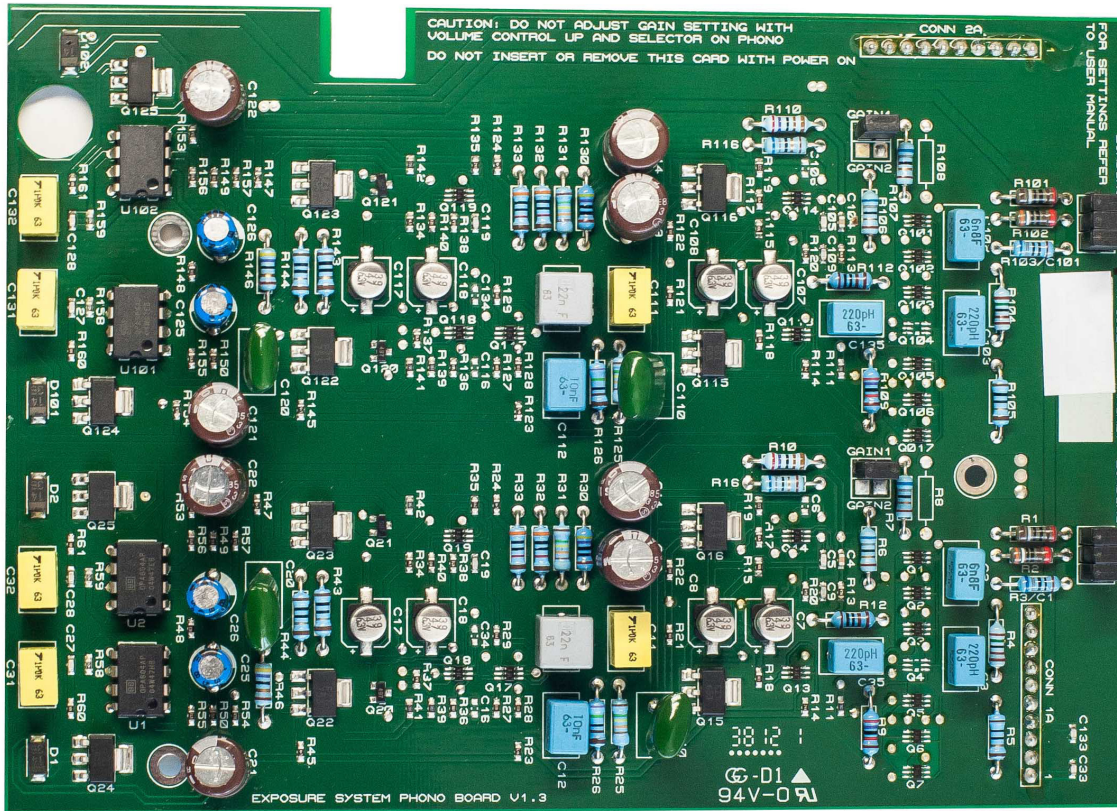


The Art of Music Reproduction



3510 & 5010 MC Board

Specifications

Sensitivity and Signal to Noise, ref 1kHz and 250mV Out :
 GAIN 1 jumper fitted : 2.5mV, >68dB S/N (default setting)
 No jumper fitted : 5mV, >70dB S/N

Loading :

6n8 in parallel with 1k5 Ohms
 Or With Loading Jumpers Fitted :
 1+2+3 100 Ohms (default)
 1+2 110 Ohms
 1+3 130 Ohms
 2+3 210 Ohms
 1 160 Ohms
 2 310 Ohms
 3 470 Ohms

Features

- All discrete transistor audio stages
- High quality parts used throughout
- Tight tolerance parts used for accurate equalisation
- Low noise power supply regulators
- DC coupled input stage

Can be fitted to :

- 3010 Integrated Amplifier
- 3010S Integrated Amplifier
- 3010S2 Integrated Amplifier
- 3010S2 Pre-Amplifier
- 3010S2D Integrated Amplifier
- 3010S2D Pre-Amplifier
- 3510 Integrated Amplifier
- 3510 Pre-Amplifier
- 5010 Pre-Amplifier