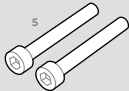
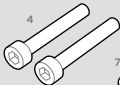
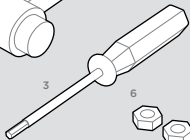
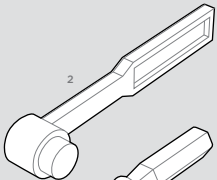
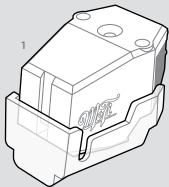


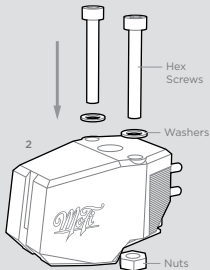
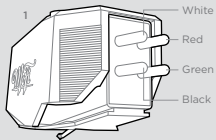
Mofi

ELECTRONICS



IN THE BOX

1. StudioTracker Cartridge with Stylus Guard
2. Stylus Cleaning Brush
3. Hex Driver
4. 2.5mm x 20mm Hex Screw (2)
5. 2.5mm x 18mm Hex Screw (2)
6. 2.5mm Nut (2)
7. 2.5mm Nylon Washer (2)



SETUP

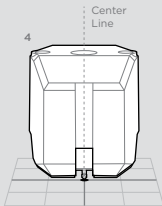
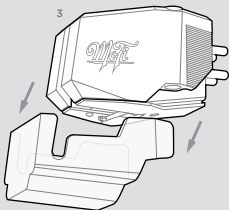
! Keep stylus guard in place during installation to prevent damage to the needle

1. Connect the four headshell leads, making sure the color-coated leads match the corresponding color-coded pins.
2. Carefully mount cartridge to the headshell. Let nut rest against cartridge body to allow thread to catch. Tighten screws, leaving the ability to make slight adjustments.

- Carefully remove stylus guard, balanced the arm, and set an approximate tracking force of 2g.
- Using the Mobile Fidelity GEO-Disc or other alignment tool, set overhang/zenith by adjusting cartridge so the stylus tip sits right on the bullseye while the cantilever is parallel with the line that intersects the bullseye. Then tighten the cartridge screws and double-check your work.

If your turntable allows, check VTA, azimuth, and anti-skate. Double-check overhang/zenith.

Set the tracking force to 1.8 - 2.2g. We recommend 2g.

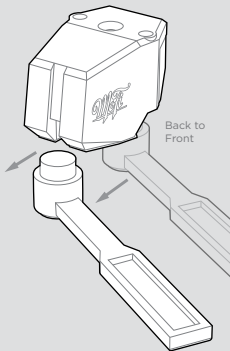


Front View

USAGE AND CARE

! Always use tonearm's lift mechanism for cueing

! Clean your records before each play to avoid unnecessary wear



After each play, gently clean your stylus, always brushing back-to-front. We recommended Mobile Fidelity LP#9 Stylus Cleaner.

	StudioTracker	UltraTracker	MasterTracker
Type	Dual Magnet (MM) Stereo	Dual Magnet (MM) Stereo	Dual Magnet (MM) Stereo
Weight	6.4g	9.7g	9.7g
Tracking Force	1.8 - 2.2g	1.8 - 2.2g	1.8 - 2.2g
Impedance	47kOhm	47kOhm	47kOhm
Capacitance	100pF	100pF	100pF
Frequency Response	20-20,000Hz	20-25,000Hz	20-25,000Hz
Stylus	Elliptical	Nude Elliptical	Micro-Line
Output Voltage	3.5mV	3.5mV	3mV
Color	Grey	Silver	Dark Grey

MoFi ELECTRONICS

www.mofielectronics.com

MoFi Electronics - 1811 W Bryn Mawr Ave Chicago IL