



RADIUS 7

MANUAL



Congratulations on your purchase of the Roksan Radius 7 record player. This record player is designed and manufactured to the highest specification and rigorously tested to reward you many years of listening pleasure.

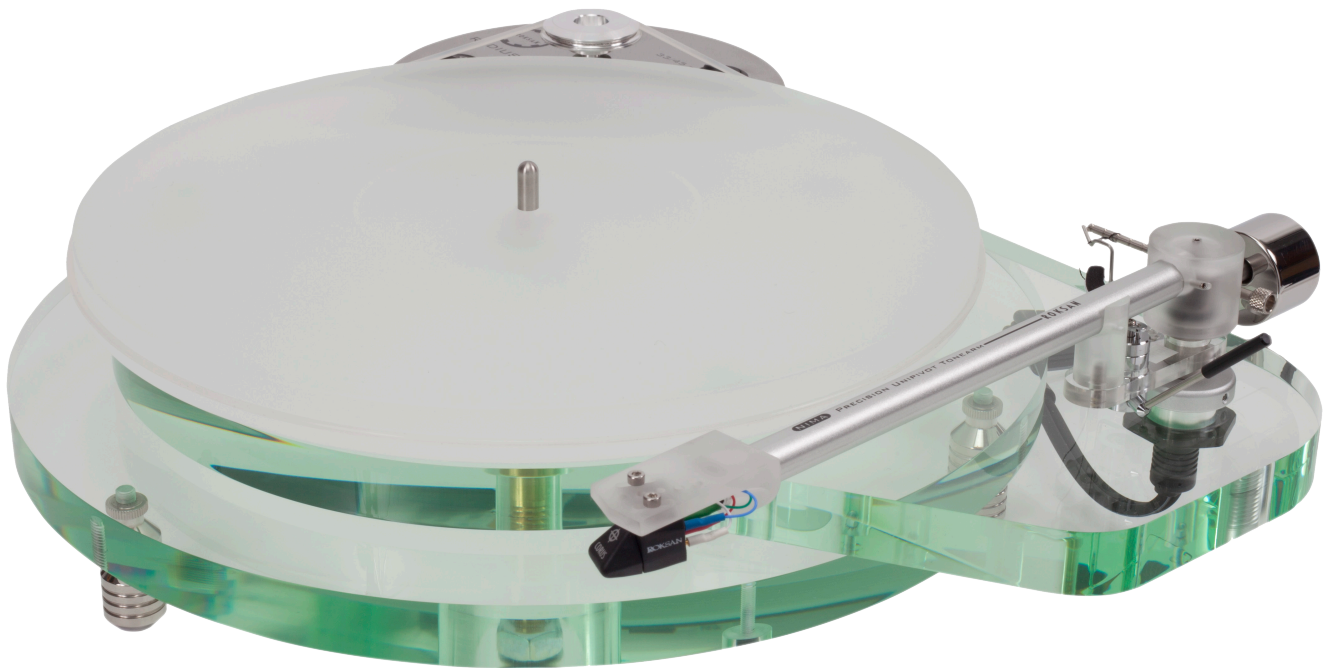
Your Radius 7 record player is at the heart of your vinyl replay system. Its correct installation, set-up and operation will have a profound influence on the sonic performance of your complete audio system.

Please read the contents of this manual thoroughly. It will help you to understand your record playing equipment better and enhance your listening pleasure.



BRIEF

The design of the Radius 7 record player has many unique features not found in other similar turntables. The drive mechanism utilises an advanced custom motor fitted with a precision-machined solid aluminium alloy pulley. The main bearing housing and spindle are custom designed and machined from solid brass and solid stainless steel to extremely high precision to ensure ultra smooth running and longevity. The platter is machined from solid acrylic to very high accuracy and ensures speed stability. Main bearing, platter and tonearm are mounted on the sub plinth and three point de-coupled from the main plinth to maximise performance and minimise acoustic break through. The motor assembly is mounted on the motor block and then onto the main plinth and further decoupled to avoid motor noise break through. The tonearm cable is rigidly fixed to the main plinth that acts as a mechanical ground and minimises interference with the sub plinth. The Radius 7 has three custom made adjustable spike feet to allow levelling and provide optimum coupling to the surface that it sits on. Partnered with the NIMA tonearm, the Radius 7 gives unparalleled performance in this class.



ROKSAN AUDIO

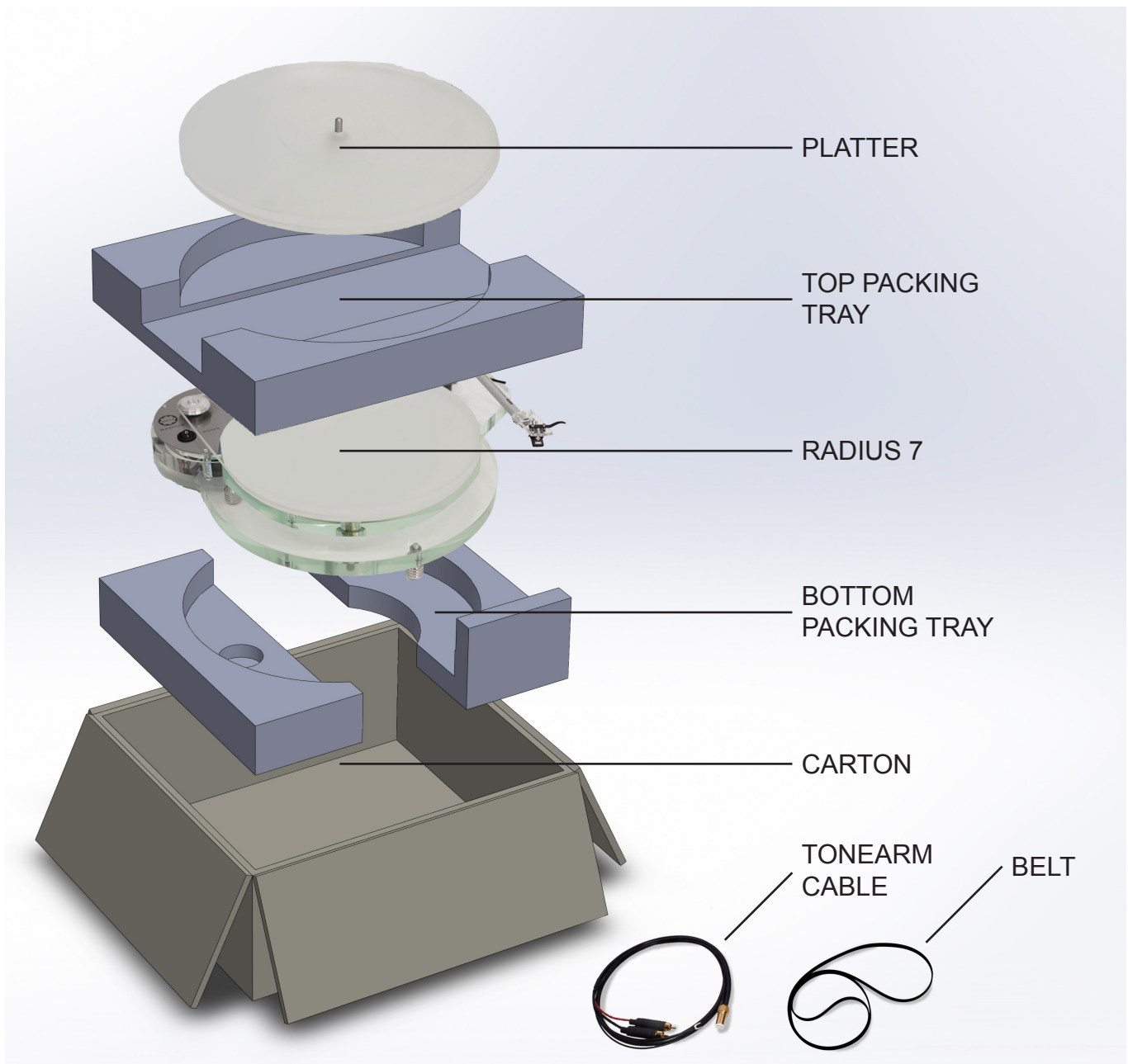


PACKAGING

Your Radius 7 is carefully and thoughtfully packed so that the packaging can be re-used Whenever you need to transport it. Please store all the packaging material for future use.

WARNING:

The NIMA tonearm is shipped without its counterweight attached and locked in transit position. It is also secured onto the arm rest with a releasable tie. Please refer to the NIMA user manual for its correct installation and setup.



ROKSAN AUDIO



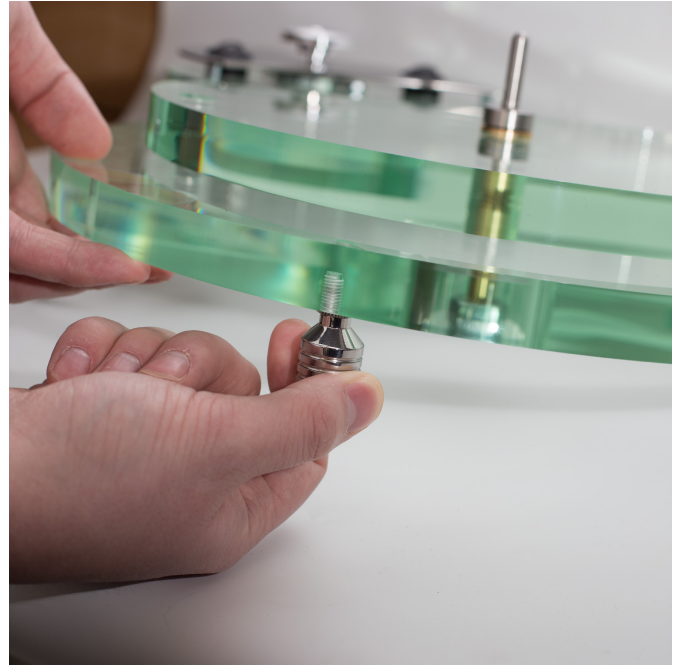
RADIUS 7

ASSEMBLY

Remove the Radius 7 from its protective bag. If the Radius 7 is fitted with the NIMA tonearm, be extra careful not to damage the arm while you are assembling the record player. If in doubt, remove the tonearm (refer to the NIMA user manual).



Check that the voltage label indicates the correct voltage range and frequency for your mains supply.



Adjust the feet using locknut to ensure the Radius 7 is absolutely level.



Remove the platter, with the record label recess upper most, carefully locate its central hole over the main bearing spindle and gently lower it until the two are fitted together.



ROKSAN AUDIO

Monitor Audio Ltd, 24 Brook Road, Rayleigh, Essex, SS6 7XJ, United Kingdom
website: www.roksan.co.uk email: info@roksan.co.uk
Tel: +44 (0)1268 740580



RADIUS 7



Remove the drive belt and gently place it around the platter and then onto the pulley. It is important to check that your mains supply frequency corresponds to the frequency specified on the Radius 7 mains input label.

NOTE:

The main bearing is already charged with correct type of oil & grease and **it is important that the main bearing spindle is not removed from the bearing housing.** This will disperse some of the oil and necessitate charging the main bearing with oil again. The main bearing requires cleaning with a cotton bud and recharging with Roksan supplied bearing oil every 6-12 months. Consult your Roksan appointed retailer/distributor or contact Roksan Audio for any assistance.

Finally, for assembling and fitting of your tonearm and cartridge, refer to the manufacturer's user manual.

IMPORTANT:

The Radius 7 is mains operated. **DO NOT** try to gain access to the inside of this unit. Refer all servicing to your Roksan appointed retailer/distributor or contact Roksan Audio.

ROKSAN AUDIO

Monitor Audio Ltd, 24 Brook Road, Rayleigh, Essex, SS6 7XJ, United Kingdom
website: www.roksan.co.uk email: info@roksan.co.uk
Tel: +44 (0)1268 740580



INSTALLATION

Place the Radius 7 on a rigid level surface. The arm cable should be securely fixed into the base of the tonearm and connected to the phono input of the amplifier without pulling on to the Radius 7. It is important to ensure the phono input is matched with the type of cartridge you are using and that the tonearm cable ground lead is firmly attached to the phono input grounding point on the amplifier.

To ensure correct geometry, tracking weight and anti-skate force, the cartridge/tonearm should be assembled according to manufacturer's instructions.

Connect the power lead to the correct voltage/frequency mains supply and switch the Radius 7 on. The platter will start to rotate at the speed corresponding to the speed selected (33 or 45rpm). In most countries, 220-240Vac mains supplies are at 50Hz and 110-120Vac mains supplies are at 60Hz. If you are unsure of your mains supply frequency, consult your local electricity supplier.

NOTE:

Always remove the platter before moving/transporting the Radius 7. If fitted with the NIMA, remove the counter weight assembly, lock the NIMA in transit position and secure it with the releasable tie-wrap to its arm rest.

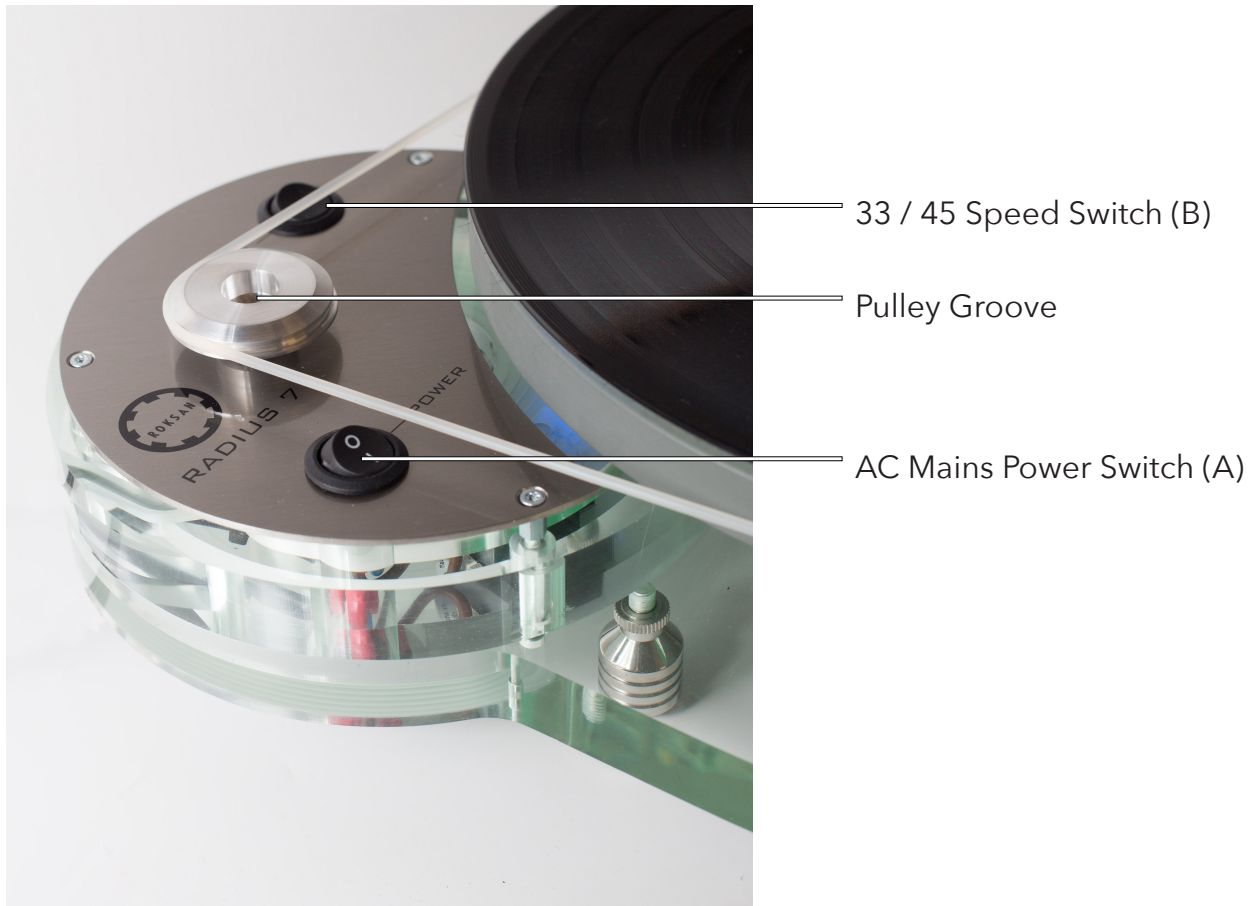
NOTE:

Clean the belt using only a slightly dampened cloth and secure it with the releasable tie-wrap to its arm rest.



OPERATION

Your Radius 7 record player is now ready for use. Switch the Radius 7 on using the POWER button (A) and ensure the correct speed is selected by pressing the 33/45 button (B). Blue indicates 33RPM, red 45RPM. When the LED is flashing, the turntable is coming up to speed and stabilising. This occurs upon power-on or when you select a new speed and will take 3-5 seconds before the speed is stable.



Check the amplifier volume is set to low and that the correct input for phono is selected. Gently increase the volume and check for any unwanted hum/noise. Now check the hum level with the amplifier at high volume. There should be no hum or very low level of hum audible (remember to lower the volume afterwards). If so, gently lower the arm/cartridge onto the track you want to listen to and enjoy the music.



TROUBLESHOOTING

If you suspect that your Radius 7 record player is not working correctly, first check all the connections. Pay particular attention to cartridge tag connections, (channel & phase), tonearm cable connections (phono RCAs & ground) and mains lead connection. Below are some commonly encountered problems with suggestions for possible cure. The list is not exhaustive: If you have any unresolved problems, please consult Roksan.

SYMPTOM	LIKELY CAUSE	SUGGESTED REMEDY
No power	<ul style="list-style-type: none">• AC Mains lead not inserted properly• Unit not switched on	<ul style="list-style-type: none">• Ensure AC Mains lead is fully inserted• Switch unit on
Wrong speed	<ul style="list-style-type: none">• Incorrect speed selection	<ul style="list-style-type: none">• Check playing speed of record and choose correct motor speed
Hum from speakers	<ul style="list-style-type: none">• Tonearm cable ground not connected or incorrect grounding	<ul style="list-style-type: none">• Connect tonearm cable ground lead to phono amp ground terminal• Check mains polarity and grounding on all connected equipment



RADIUS 7

GUARANTEE

There are no user serviceable parts inside your Roksan Radius 7. If a fault should develop, refer any servicing to your appointed Roksan dealer, distributor or Roksan approved service agent.

Your Roksan Radius 7 is guaranteed against any defect in materials and workmanship for a period of five years from the date of purchase. This guarantee only becomes effective if the Radius is warranty registered at Roksan.

This guarantee excludes:

- Damage caused due to accident, misuse, neglect and incorrect installation, adjustment or repair.
- Liability for damage or loss during transit from the retailer or purchaser to Roksan or its authorised distributor for the purposed for repair or inspection.

Carriage costs to Roksan shall be borne by the consignor.

All claims under this guarantee must be made through an authorised Roksan retailer.

If equipment returned for repair to Roksan is found on inspection to comply with the product specification Roksan reserves the right to make a charge for examination and return carriage.

ROKSAN AUDIO

Monitor Audio Ltd, 24 Brook Road, Rayleigh, Essex, SS6 7XJ, United Kingdom
website: www.roksan.co.uk email: info@roksan.co.uk
Tel: +44 (0)1268 740580

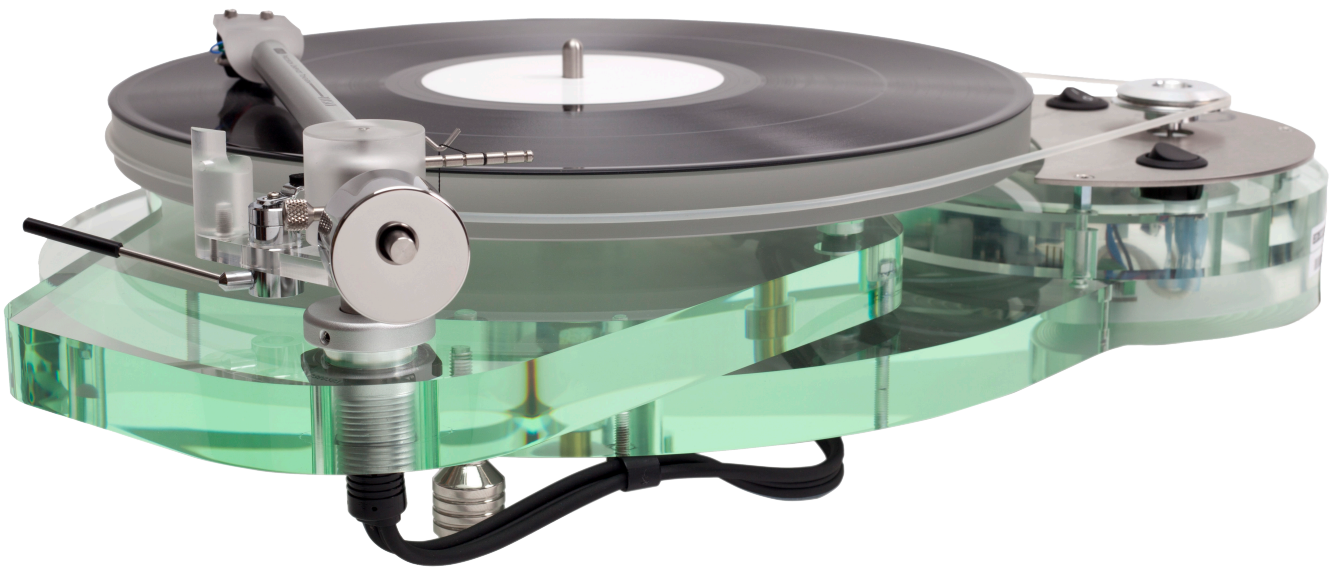


SPECIFICATIONS

Main Bearing Spindle	Precision machined stainless steel
Main Bearing Housing	Precision machined solid brass
Main Bearing Ball	Precision case hardened steel
Pulley	Precision machined aluminium alloy
Platter	Precision machined acrylic
Motor	Custom made 24 pole synchronous
Speed	33 & 45 rpm
Power	100-240V 50-60 Hz
Power Consumption	10 Watts
Rumble	<-75dB
Wow & Flutter	<0.04%
Dimension	400 x 350 x 150mm (W x D x H)
Weight	7kg

Roksan Audio declares that the apparatus Radius 7 complies with the essential requirements and other relevant provisions of Directive 1999/5/EC

All specifications are liable to change without prior notice. E & O.E.





Roksan Audio

Monitor Audio Limited
24 Brook Road
Rayleigh
Essex
SS6 7XJ

+44 (0)1268 740580
info@roksan.co.uk