



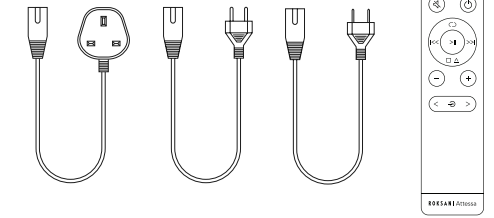
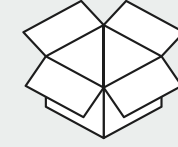
roksan.com/atessa-support



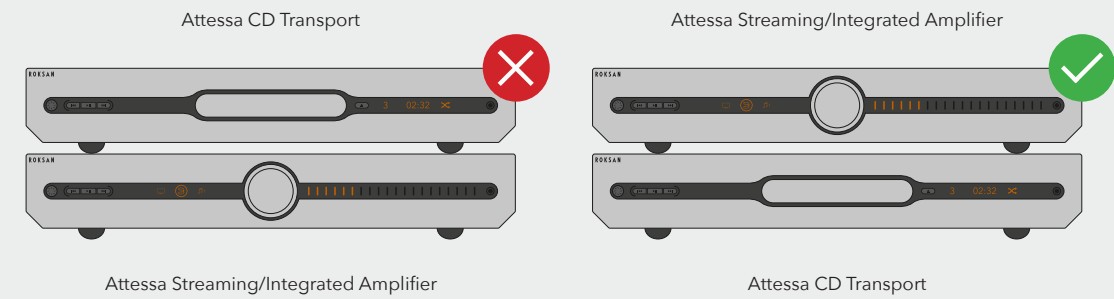
Let's get started

Dimensions & Material

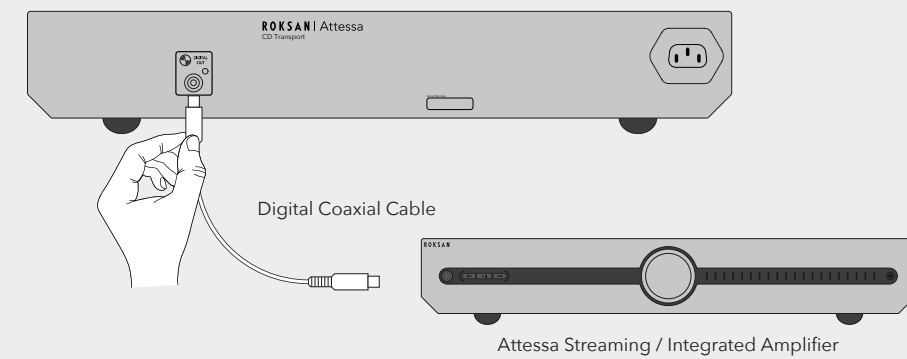
Dimensions (Inc. Connections)	H76 x W432 x D349 mm
Dimensions (Exc. Connections)	H76 x W432 x D349 mm
Weight	6.1 Kg
Construction	Formed plated steel and bespoke machined anodised aluminium front panel
CD Support	
CD Standards	CD / CD-R
Gapless Playback	Yes
Outputs	
Digital Output	SPDIF coaxial (16bit/44.1kHz)
Power Supply	
Mains input	Mains transformer will self-select for either 100-130 VAC 50/60Hz 210-240 VAC 50/60Hz (Operational down to 90VAC Update to 85VAC after test)
Power Consumption	<0.5W in standby, Full Power: 25W max
Other	
Service / Update	USB mini B connector (software update & service info ONLY)



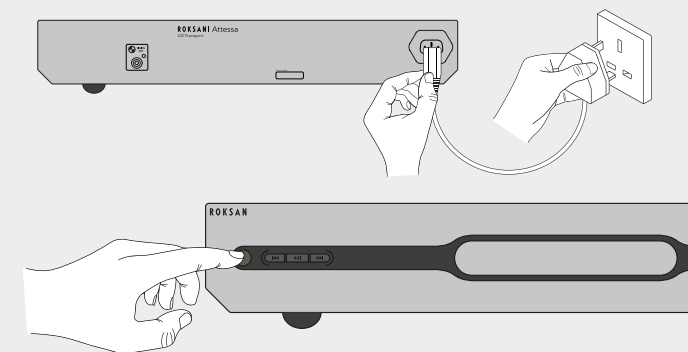
1 Place in suitable location



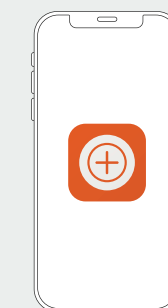
2 Connecting to an Amplifier or DAC (Digital Output Only)



3 Power on



4 Download MaestroUnite App

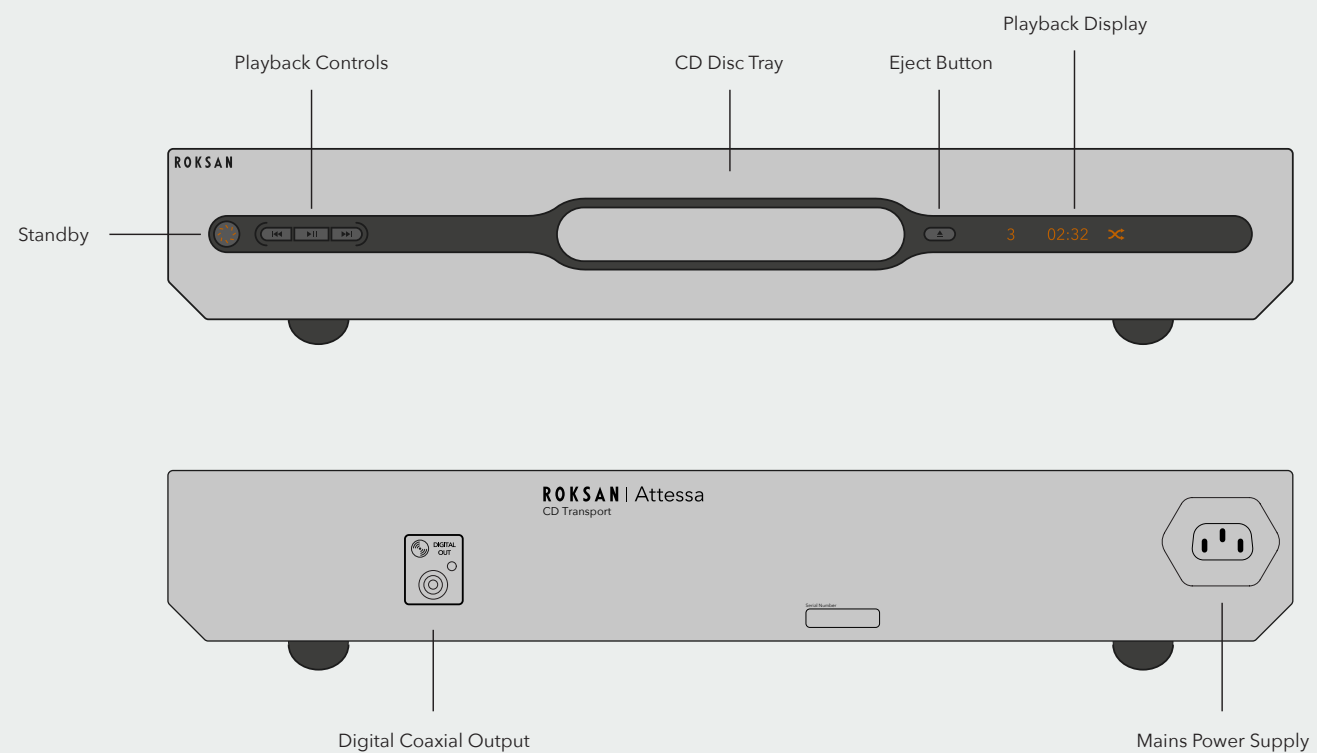


Follow the instructions on the app to finish setting up your product.

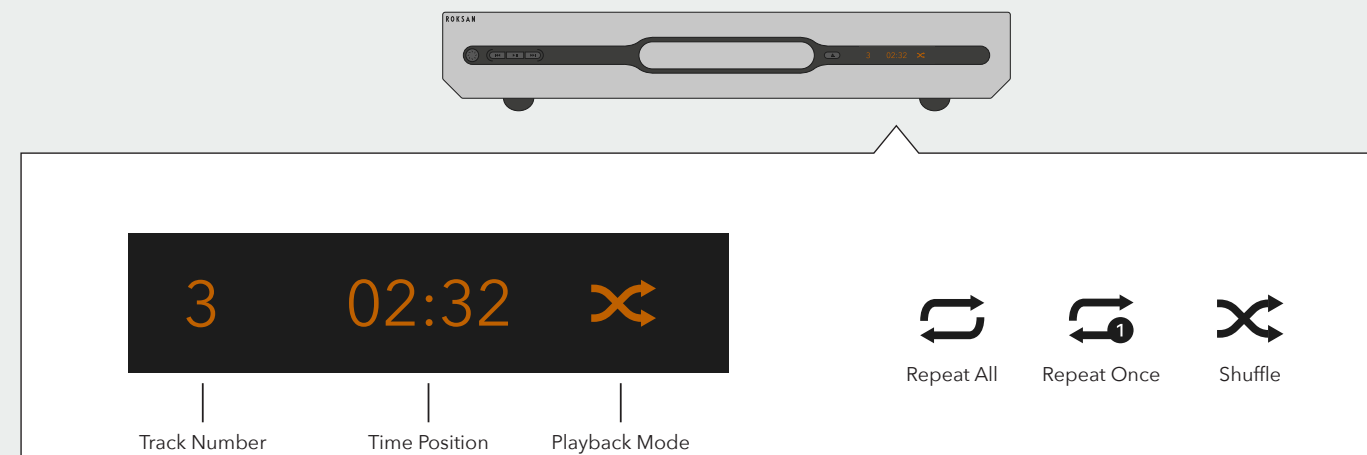
Already have MaestroUnite?
Open the app, select + then follow setup



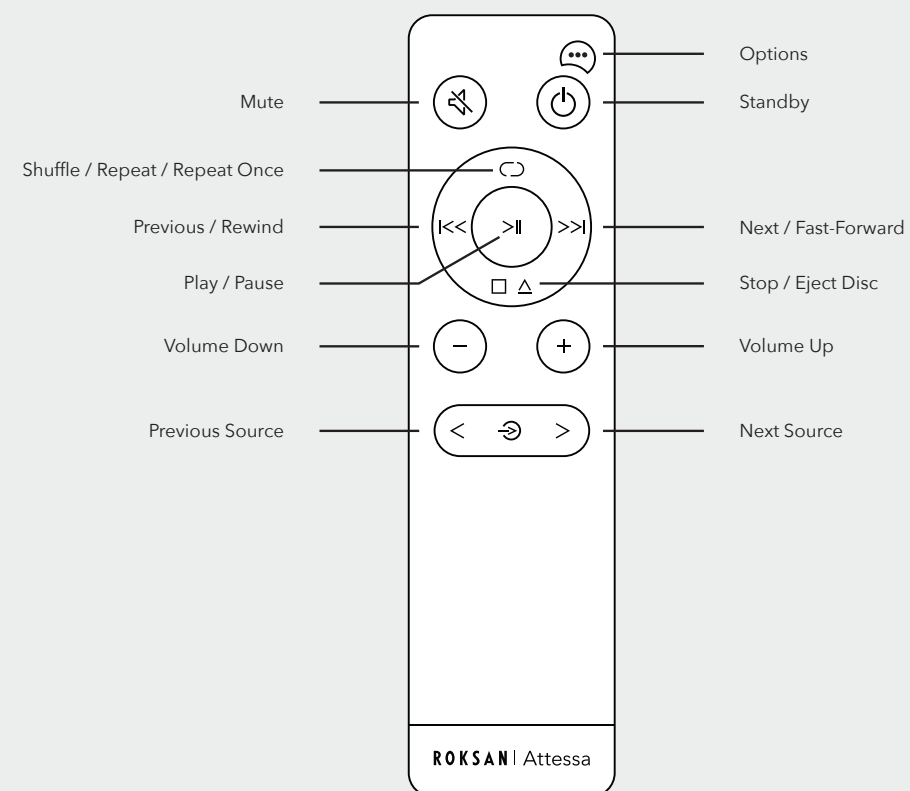
Product Overview



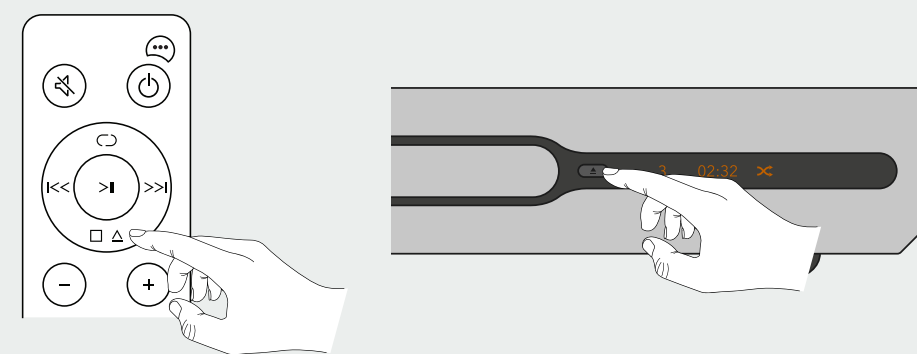
Display Icons



Using the Remote Control



Opening & Closing Disc Drive



Inserting CD

